



OCALA SYMPHONY

Matthew Wardell, Music Director



26/27 SEASON

YOUR ORCHESTRA, YOUR MUSIC



2026/2027

SEASON AT A GLANCE

SUBSCRIPTION CONCERTS

PICTURES AT AN EXHIBITION

Saturday, Oct. 24 - 7:30PM | Sunday, Oct. 25, 2026 - 3:00PM

POPS! GOES THE HOLIDAYS

Saturday, Dec. 5 - 7:30PM | Sunday, Dec. 6, 2026 - 3:00PM + 7:30PM

ENCHANTED

Saturday, Jan. 23 - 7:30PM | Sunday, Jan. 24, 2027 - 3:00PM

THE LONG ARC

Saturday, Feb. 27 - 7:30PM | Sunday, Feb. 28, 2027 - 3:00PM

FATE AWAKENS

Saturday, March 20 - 7:30PM | Sunday, March 21, 2027 - 3:00PM

FAMOUS LAST WORDS

Saturday, April 17 - 7:30PM | Sunday, April 18, 2027 - 3:00PM

SIGNATURE EVENTS & SERIES

RED, WHITE, & OSO BLUE: 250 YEARS

Saturday, June 27 - 3:00PM | Sunday, June 28, 2026 - 3:00PM

MUSIC BOX 01: CELLO & IVORY

Sunday, Aug. 23, 2026 - 3:00PM

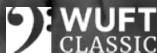
MUSIC BOX 02: ALL IN THE FAMILY FT. STEWART KITTS

Sunday, Sept. 20, 2026 - 3:00PM

OCALA SYMPHONY CHORUS: A CHORAL PORTRAIT OF AMERICA

Sunday, Sept. 27, 2026 - 3:00PM

SEASON SUPPORT PROVIDED BY:



PHOTOGRAPHY: Maven Photo and Film and Joshua Jacobs

2026/2027

SEASON AT A GLANCE

SIGNATURE EVENTS & SERIES (CONT.)

DISNEY'S ALADDIN IN CONCERT

Saturday, Nov. 7 - 7:30PM | Sunday, Nov. 8, 2026 - 3:00PM

MUSIC BOX 03: DUO SYLVANIA

Sunday, Nov. 15, 2026 - 3:00PM

OCALA SYMPHONY CHORUS: HANDEL'S MESSIAH

Sunday, Nov. 22, 2026 - 3:00PM

23RD ANNUAL SYMPHONY UNDER THE LIGHTS

Friday, Dec. 4, 2026 - 7:00PM

NUTCRACKER WITH THE OSO & DANCE ALIVE NATIONAL BALLET

Friday, Dec. 11 - 7:00PM | Saturday, Dec. 12, 2026 - 8:00PM

36TH YOUNG ARTIST COMPETITION FINALS

Sunday, Jan. 10, 2027 - 3:00PM

MUSIC BOX 04: OSO PERCUSSION ENSEMBLE

Sunday, Feb. 7, 2027 - 3:00PM

OCALA SYMPHONY CHORUS: MYSTICAL SONGS

Sunday, March 7, 2027 - 3:00PM

STEELN' PEACHES: AN ALLMAN BROTHERS SYMPHONIC EXPERIENCE

Saturday, April 3, 2027 - 7:30PM

MUSIC BOX 05: JOSHUA AND HANNAH MAZUR

Sunday, May 2, 2027 - 3:00PM

SIGNATURE EVENT & SERIES PRICING

Special concert pricing is listed on the **ticket order form** on page 15 and 16. Tickets can also be purchased at www.ReillyArtsCenter.com or through the **box office**.

BOX OFFICE: Call **352.351.1606** or visit in person **T-F, 9AM-1PM**

Subscribers receive complimentary tickets to the Young Artist Competition.

MUSIC DIRECTOR AND CONDUCTOR MATTHEW J. WARDELL

As we enter this new season, I keep coming back to a phrase that has guided my work here for many years: Your Orchestra, Your Music. For me, it means programming concerts that reflect the curiosity, passion, and spirit of this community—music that honors where we've been, embraces where we are now, and invites every listener to feel a genuine sense of connection and ownership.



This season is deeply rooted in storytelling. Our classical subscription concerts explore how music responds to art, myth, history, faith, and the human experience itself. We open the year in thrilling fashion with *Pictures at an Exhibition: From Dalí to Mussorgsky*, transforming iconic works of visual art into sound—from the surreal brilliance of Michael Daugherty's *The Hallucinogenic Toreador* and the haunting mystery of Rachmaninoff's *Isle of the Dead* to Mussorgsky's monumental *Pictures at an Exhibition* in Ravel's dazzling orchestration. From there, the season travels through enchanted ballet worlds (*Swan Lake*, *The Firebird*, *Cinderella*), journeys of reflection and renewal (*The Long Arc* with Philip Glass's *The American Four Seasons* and *Zeitgeist*, a world premiere by Gala Flagello), and music that speaks powerfully to resilience and awakening—from Beethoven's fateful *Fifth Symphony* to Carlos Simon's electrifying *WAKE UP!* We close the season with *Famous Last Words*, pairing Strauss's radiant *Four Last Songs* with Tchaikovsky's deeply moving *Pathétique Symphony*.

This year also brings moments I am especially excited to share with you. We are proud to present Disney's *Aladdin in Concert*, performed live with full orchestra—marking the first Disney live-to-film presentation ever in North Central Florida—and to welcome an exhilarating collaboration with *Steeln' Peaches*, one of the country's premier rock-and-roll revues. Our choral season continues to be a vital and deeply meaningful part of who we are, from *A Choral Portrait of America* and a luminous Christmas selection from Handel's *Messiah* to the springtime journey of *Mystical Songs*. And our Music Box chamber series continues as an intimate way to experience the Ocala Symphony, placing audiences just feet from the musicians in the NOMA Black Box Theatre.

Across every concert, you'll hear extraordinary musicians, remarkable soloists, beloved masterworks, and bold new voices. I am continually inspired by the passion and dedication of our orchestra, chorus, guest artists, and staff, and I am deeply grateful for the trust and enthusiasm of our audience. Thank you for being part of this orchestra and this journey.

I can't wait to welcome you into the hall and into another season of unforgettable music!

Sincerely yours, Matthew Wardell | Music Director and Conductor

Matthew Wardell is a dynamic conductor celebrated for electrifying performances, imaginative programming, and a podium presence that fuses precision with unabashed enthusiasm. Having conducted more than 520 works across 310 live performances, he is recognized for championing overlooked composers, pairing bold new voices with masterworks of the canon, and delivering high-impact live-to-film productions. A recipient of The American Prize's Vytautas Marijosius Memorial Award in Orchestral Programming, Wardell is in his 18th season as Music Director of the Ocala Symphony and has become a sought-after guest conductor with recent appearances leading the Jacksonville Symphony, the Florida Orchestra, Chamber Orchestra Pittsburgh, the Southwest Florida Symphony Orchestra, the New England Philharmonic, the Gainesville Orchestra, and the Pioneer Valley Symphony Orchestra. Visit matthewwardell.com for more information and Matt's upcoming performances.

Saturday

October 24, 2026

7:30PM

Sunday

October 25, 2026

3:00PM

PICTURES AT AN EXHIBITION: FROM DALÍ TO MUSSORGGY

Open the season with a feast for the senses as the full orchestra launches the year in spectacular fashion. This program transforms iconic works of visual art into sound—surreal, sweeping, and unforgettable. Michael Daugherty's dazzling *The Hallucinogenic Toreador* bursts with color and wit, channeling the dreamlike world of Salvador Dalí, while Rachmaninoff's haunting *Isle of the Dead* draws listeners into a darkly beautiful, hypnotic soundscape inspired by Böcklin's mysterious painting. After intermission comes one of the greatest orchestral showpieces of all time: *Pictures at an Exhibition*, Mussorgsky's vivid musical gallery, brought to blazing life in Ravel's brilliant orchestration. Bold, immersive, and thrilling from the first note to the last, this season opener is a must-hear celebration of art, imagination, and orchestral power.

FEATURED WORKS:

The Hallucinogenic Toreador

Michael Daugherty

World Premiere

Isles of the Dead

Sergei Rachmaninoff

Pictures at an Exhibition

Modest Mussorgsky



FEATURING
Michael Daugherty
COMPOSER

SUBSCRIPTION CONCERT

Saturday

December 5, 2026

7:30PM

Sunday

December 6, 2026

3:00PM + 7:30PM

POPS! GOES THE HOLIDAYS

Pops Goes the Holidays is a jubilant celebration of the season, blending beloved holiday classics, festive pops favorites, and symphonic sparkle into one unforgettable evening. This concert captures the warmth, nostalgia, and sheer joy that define the holidays, as the full orchestra brings new life to timeless carols and cherished winter melodies. Featuring the incomparable humor and love of Maestro Wardell and the musicians of the Ocala Symphony, the program radiates both artistry and heart, creating moments that are as entertaining as they are meaningful. Audiences can expect lush orchestrations, joyful sing-along opportunities, and a musical journey that moves seamlessly from reflective and heartwarming to exuberant and triumphant. Designed for families, longtime patrons, and first-time concertgoers alike, Pops Goes the Holidays is more than a concert — it is a cherished community tradition and a festive musical gift that ushers in the season with brilliance, warmth, and joy.

On Top of
the **World.**

SUBSCRIPTION CONCERT

Saturday

January 23, 2027

7:30PM

Sunday

January 24, 2027

3:00PM

ENCHANTED: SWAN LAKE, FIREBIRD, AND CINDERELLA

Step into worlds where magic is real, danger is overcome, and transformation is possible. This program brings together three beloved ballet scores—Tchaikovsky's *Swan Lake*, Stravinsky's shimmering *Firebird Suite*, and Prokofiev's enchanting *Cinderella*—each telling stories of curses broken, heroes tested, and impossible dreams made real. From the swan's haunting theme to the *Firebird's* blazing dance, from midnight's chime to the final waltz, these are tales we return to again and again, not because they are simple, but because they remind us that wonder, courage, and hope are forces as powerful as any spell. Prokofiev's *Cinderella* will be brought vividly to life with narration by Nell Page, a beloved fixture of the North Central Florida arts community, adding warmth and storytelling charm to this timeless fairy tale. Conducted by the Ocala Symphony's Principal Guest Conductor, Raymond Chobaz, this concert invites you to rediscover the magic that lives in great orchestral storytelling.

FEATURED WORKS:

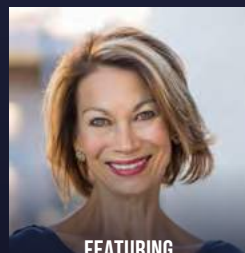
Suite from Swan Lake
Pyotr Ilyich Tchaikovsky

The Firebird Suite (1919 version)
Igor Stravinsky

Cinderella Suite No. 1
Sergei Prokofiev



FEATURING
Raymond Chobaz
PRINCIPAL GUEST CONDUCTOR



FEATURING
Nell Page
NARRATOR

SUBSCRIPTION CONCERT

Saturday

February 27, 2027

7:30PM

Sunday

February 28, 2027

3:00PM

THE LONG ARC

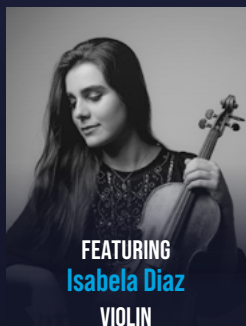
The Long Arc follows powerful orchestral string music through four centuries, from baroque masterpieces to contemporary reimaginings. Violinist Isabela Diaz takes center stage in Philip Glass's Lyrical Violin Concerto No. 2 "The American Four Seasons," where minimalist patterns evoke the changing landscape of a continent. After intermission, the world premiere of Gala Flagello's *Zeitgeist*, a new work commissioned by the Ocala Symphony exploring music's dual nature as both timely and timeless—how artists inevitably reflect the spirit of their age while creating art that transcends it, reminding us that the concert hall itself is a collective experience spanning generations. Arvo Pärt's haunting *Cantus in memory of Benjamin Britten* and Britten's own charming *Simple Symphony*—written when he was just a teenager revisiting childhood melodies—complete this meditation on how music connects past and present, individual voices and shared humanity, in an unbroken arc of artistic expression.

FEATURED WORKS:

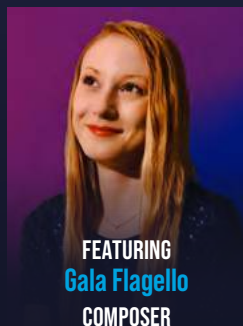
Violin Concerto No. 2
Philip Glass

Zeitgeist
Gala Flagello
World Premiere

Simple Symphony
Benjamin Britten



FEATURING
Isabela Diaz
VIOLIN



FEATURING
Gala Flagello
COMPOSER

SUBSCRIPTION CONCERT

Saturday

March 20, 2027

7:30PM

Sunday

March 21, 2027

3:00PM

FATE AWAKENS

Beethoven's Fifth Symphony opens the concert with an unmistakable surge of energy—music that transformed struggle into triumph and reshaped the symphonic tradition. From its iconic opening to its exhilarating conclusion, the symphony stands as a testament to resilience and artistic conviction. Performances by the winners of our 36th annual Young Artist Competition then bring fresh perspective and vitality to the stage, spotlighting the next generation of musical leaders. The concert closes with Carlos Simon's *WAKE UP!*, a high-energy concerto for orchestra driven by propulsive rhythms and vivid orchestral color. The result is a powerful contemporary statement that feels immediate and alive.

FEATURED WORKS:

Symphony No. 5

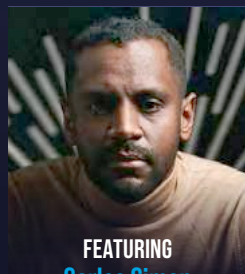
Ludwig van Beethoven

WAKE UP!

Carlos Simon

FEATURING WINNERS OF THE

36th YOUNG ARTIST COMPETITION



FEATURING
Carlos Simon
COMPOSER

SUBSCRIPTION CONCERT

Saturday
April 17, 2027

7:30PM

Sunday
April 18, 2027

3:00PM

FAMOUS LAST WORDS

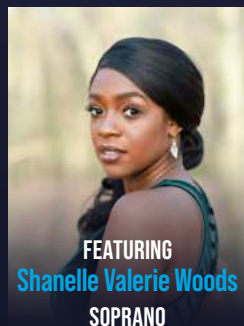
This season finale celebrates the full arc of a composer's creative life—reminding us that while we often celebrate youthful brilliance and first masterpieces, we less often pause to honor the depth, clarity, and wisdom found in a composer's final works. Mozart's *Magic Flute Overture* opens the evening with vitality and wonder, a testament to imagination at its most exuberant. Richard Strauss's *Four Last Songs*, performed by soprano Shanelle Woods, glow with warmth and acceptance, offering a radiant reflection on life's beauty rather than its end. The program concludes with Tchaikovsky's *Symphony No. 6, the Pathétique*, whose unforgettable final movement transforms farewell into profound expression. Conducted by Matthew Wardell, these closing concerts invite us to listen not backward with sorrow, but forward with gratitude—for lives, voices, and music fully realized.

FEATURED WORKS:

Overture to the Magic Flute
Wolfgang Amadeus Mozart

Four Last Songs
Richard Strauss

Symphony No. 6 "Pathétique"
Pyotr Ilyich Tchaikovsky



FEATURING
Shanelle Valerie Woods
SOPRANO

SIGNATURE EVENTS

SATURDAY
NOV. 7, 2026
7:30PM
SUNDAY
NOV. 8, 2026
3:00PM

Disney Aladdin

IN CONCERT LIVE TO FILM



DISNEY'S ALADDIN IN CONCERT LIVE TO FILM

Disney's Aladdin in Concert Live to Film transforms Disney's beloved 1992 animated classic into an unforgettable live orchestral event. On November 7 and 8, 2026, the Ocala Symphony performs Alan Menken's Academy Award® winning score in perfect synchronization with the full film projected on a cinema-quality screen above the stage. Under the baton of Maestro Matthew Wardell, more than 60 professional musicians bring every magical moment—from "Arabian Nights" to "A Whole New World"—vividly to life, while original dialogue and sound effects play seamlessly through the hall's state-of-the-art system. Presented in the 700 seat AdventHealth Mainstage at the Reilly Arts Center and fully licensed through Disney Concerts, this spectacular, family-friendly production combines the wonder of the movies with the power of live symphonic music for a truly enchanting experience.



SATURDAY
APRIL 3, 2027
7:30PM

STEELN' PEACHES: AN ALLMAN BROTHERS SYMPHONIC EXPERIENCE

This special event brings the legendary sound of the Allman Brothers Band to life in a thrilling fusion of Southern rock and full orchestral power. One of the leading Allman Brothers tribute bands performing today, Steeln' Peaches has built a devoted following for their electrifying musicianship and authentic, high-energy performances. Now, joining forces with the Ocala Symphony, they deliver classic hits reimagined with sweeping strings, bold brass, and symphonic depth. From soulful ballads to fiery jams, this dynamic collaboration transforms iconic rock anthems into a rich, immersive concert experience—where the spirit of the open road meets the grandeur of the symphony.



SIGNATURE EVENTS

SATURDAY, JUNE 27, 2026 - 3:00PM | SUNDAY, JUNE 28, 2026 - 3:00PM

RED, WHITE, AND OSO BLUE: 250 YEARS

The Ocala Symphony pays tribute to our nation's 250th birthday including a world premiere work, Revolutionary Triptych, an orchestral triptych honoring three young patriots from the Revolutionary war. As part of our annual tradition, we will conclude this special celebration of all things patriotic with a heartfelt salute to our Veterans!

**SPONSORED BY: Grace Dunlevy & Bob Levenson
Justin Yancey - Edward Jones Financial Advisor**



FRIDAY, DEC. 4, 2026 - 7:00PM

23RD ANNUAL SYMPHONY UNDER THE LIGHTS

The Ocala Symphony brings this joyful annual free concert to the community under the incredible oaks of Tuscawilla Park. Bring a blanket or chair and enjoy!



FRIDAY, DEC. 11, 2026 - 7:00PM | SATURDAY, DEC. 12 - 8:00PM

NUTCRACKER WITH THE OSO & DANCE ALIVE NATIONAL BALLET

After last season's sold-out success, the Ocala Symphony reunites with Dance Alive National Ballet for Tchaikovsky's Nutcracker. Experience the thrill of a full live orchestra as Clara's magical journey unfolds in this unforgettable holiday tradition, now offered in two performances!



SUNDAY, JAN. 10, 2027 - 3:00PM

36TH ANNUAL YOUNG ARTIST COMPETITION FINALS

See the finalists of our 36th Annual Young Artist Competition perform for an opportunity to appear live later in the season with Maestro Wardell and the Ocala Symphony!

SPONSORED BY: Margaret A. Dates



CHORAL SERIES

SUNDAY, SEPT. 27, 2026 - 3:00PM

A CHORAL PORTRAIT OF AMERICA

Led by the Ocala Symphony Chorus Director Joshua Mazur, a Choral Portrait of America offers a reflective and richly textured exploration of the American choral voice, tracing how landscape, community, faith, and longing have shaped a shared musical language. Featuring works by composers such as Copland, Randall Thompson, Whitacre, Paulus, and Stephen Foster, this program presents America not as a single story, but as a chorus of voices—plainspoken and soaring, intimate and expansive. Rooted in folk melody, hymnody, and modern lyricism, the music invites listeners to hear the nation anew: not as an idea, but as a living, breathing sound shaped by the people who sing it.



SUNDAY, NOV. 22, 2026 - 3:00PM

HANDEL'S MESSIAH

This concert presents the Christmas portion of Handel's Messiah as a focused and radiant proclamation of hope, tracing the arc from prophetic longing to the joy of Christ's birth. Beginning with the solemn promise of comfort and moving through moments of darkness, wonder, and exultant praise, these selected movements reveal the dramatic and theological clarity at the heart of Handel's masterpiece. Heard in this distilled form, Messiah becomes both intimate and expansive—inviting listeners to linger in the mystery of the Incarnation before rising together in the triumphant acclamation of the Hallelujah chorus.



SUNDAY, MARCH 7, 2027 - 3:00PM

OCALA SYMPHONY CHORUS: MYSTICAL SONGS

Mystical Songs traces a spiritual journey shaped by intimacy, wonder, and proclamation. Schubert's Mass in G opens the program with luminous restraint, offering prayer that is tender, human, and quietly assured. At the center, Vivaldi's Magnificat in G gives voice to Mary's song of awe and courage—faith spoken from the body and the heart, alive with rhythmic energy and joy. The program reaches its culmination in Vaughan Williams's Five Mystical Songs, where inward devotion flowers into radiant affirmation, and private belief is transformed into song that dares to be sung aloud.



THE OCALA SYMPHONY'S Music Box Series

The Music Box series offers an intimate chamber music experience unlike any other in Ocala. Set in the Reilly Arts Center's NOMA Black Box Theatre, audiences sit just feet from the musicians, creating a rare sense of connection and immediacy. Featuring Ocala Symphony musicians and special guests, each concert pairs exceptional performance with engaging insight—inviting listeners inside the music. Music Box celebrates collaboration, curiosity, and the joy of live music shared up close.

MUSIC BOX 1

THE LYRICAL CELLO

AUG. 23, 2026 - 3:00PM

Celebrate the expressive voice of the cello in an afternoon of warmth, lyricism, and global color. OSO Principal Cellist Lyle Lamboley joins forces with pianist Alan Clark for a musical journey that travels across centuries and continents, exploring some of the most beloved melodies in the repertoire.

MUSIC BOX 2

ALL IN THE FAMILY: THE WHOLE KITTS AND CABOODLE

SEPT. 20, 2026 - 3:00PM

Concertmaster Stewart Kitts leads a joyful celebration of musical family, joined by his daughters and siblings—many of whom regularly perform with the Ocala Symphony. Featuring beloved works by Bach and Vivaldi alongside special surprises, this program highlights the deep musical bonds formed through shared history and lifelong collaboration. Warm, spirited, and full of personality, All in the Family is chamber music at its most personal.

MUSIC BOX 3

DUO SYLVANIA

NOV. 15, 2026 - 3:00PM

Duo Sylvania—featuring Ocala Symphony Principal Second Violinist Tania Moldovan and guitarist Silviu Ciulei—presents a richly expressive program that spans centuries and cultures. From Bach and Paganini to Piazzolla, Bartók, and Romanian folk traditions, this concert explores the vibrant dialogue between violin and guitar. Intimate, colorful, and deeply engaging, Duo Sylvania brings chamber music's conversational spirit vividly to life.

MUSIC BOX 4

OSO PERCUSSION ENSEMBLE

FEB. 7, 2027 - 3:00PM

Rhythm and energy take center stage as members of the Ocala Symphony Percussion section transform the Black Box into a dynamic world of sound. Featuring crossover works and classical percussion repertoire, this program highlights the astonishing range of color, texture, and excitement the percussion section can offer. Visually engaging and irresistibly fun, this concert promises surprises at every turn.

MUSIC BOX 5

JOSHUA AND HANNAH MAZUR

MAY 2, 2027 - 3:00PM

Two remarkable voices, one unforgettable afternoon. Ocala Symphony Chorus Director Joshua Mazur (baritone) and soprano Hannah Mazur bring some of the most compelling vocal music to life in an intimate recital. You'll experience the full emotional power of music as the Mazurs explore the voice's ability to illuminate the deepest human emotions through songs, arias and duets from the masterworks of the repertoire.

YOUR ORCHESTRA MAKING AN IMPACT

OPEN REHEARSALS

Open Rehearsals give families and students an opportunity to enjoy the orchestra in a relaxed environment, while experiencing an educational, behind-the-curtain view on how a symphony prepares for a professional concert! Rehearsals are free and include snacks.



CHAT WITH THE CONDUCTOR

Enjoy a cup of coffee or a cocktail with Matthew Wardell, Ocala Symphony Conductor, as he leads in-depth discussions about the pieces and composers that will be featured at upcoming concerts. Coffee with the Conductor is held at 10am at the Marion Theater and Cocktails with the Conductor is held at 6 pm in the NOMA Black Box Theater on select dates. Both events are free and you do not need a ticket to the concert to attend.

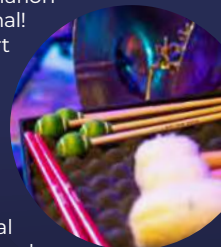


ACCESS FOR ALL

The Reilly Arts Center distributes more than 500 tickets to veteran, senior, mental health and child advocacy programs in Marion County annually. Our goal is to provide access for all to symphonic music, live performances, and more. The inspiration and healing power that comes from experiencing a live performance cannot be matched.

SYMPHONY FOR SCHOOLS

The Symphony for Schools program takes professional musicians into Marion County classrooms for a 30-minute presentation that's fun and educational! Musicians demonstrate orchestral instruments, perform music from Mozart to Moana, and get the students involved!



MARION THEATRE

The historic 1941 Marion Theatre in downtown Ocala is operated by the Ocala Symphony and offers a diverse lineup of programming, including a Summer Kids Movie Series, second-run films, concerts and special events. It also serves as Ocala's home of comedy, hosting various national and regional acts throughout the year. All programming not only provides a fun and engaging experience for visitors, but also supports the growth and development of downtown Ocala and the local community. [Learn more: www.mariontheatre.org](http://www.mariontheatre.org)

MUSIC EDUCATION FOR ALL

A gift of the LILAC Foundation, the Community Music Conservatory, located at the Reilly Arts Center, features multiple teaching studios, professional staff and faculty, and performance spaces. Programming includes group classes and private instruction designed for students of all ages, backgrounds, and skill levels. Thanks to our generous donors, scholarships are available for students who demonstrate need and a desire to learn. [Learn more: www.reillyartscenter.com/education](http://www.reillyartscenter.com/education)

SUPPORT THE ORCHESTRA MAKE A DONATION | BECOME A MEMBER

Maintaining and expanding the Orchestra's on-stage and community outreach programs relies on support beyond ticket purchases. There are many ways to give back to the Ocala Symphony, each offering meaningful benefits while helping us fulfill our mission to connect as many people as possible with the arts.

MAKE A DONATION

Donations to the annual fund are 100% tax deductible with donors receiving recognition in the concert programs. Want to commemorate your support of the Ocala Symphony in a meaningful way? As a part of the Milestones for Music campaign, a gift to the annual fund of \$1,000 or more allows you to create a permanent tribute through an engraved seat plaque inside the Reilly Arts Center.

BECOME A MEMBER of the OSO and Reilly Arts Center

Memberships support arts programming while providing year-round, tangible benefits for your family or company based on your giving level. Benefits are valid for one year from purchase, and the membership amount, minus tangible benefits (such as tickets), may be tax-deductible as allowed by law.

MEMBERSHIP LEVELS

	Fan \$100	Friend \$1,000	Director \$5,000	Producer \$15,000
Early access to purchase tickets				
Recognition in Ocala Symphony concert programs at level of giving				
Pair of Season Subscription tickets				
Additional complimentary tickets to Reilly events (Limit of 4 per show)		8	16	40
Complimentary tickets to regular Marion Theatre film programming				
Access to the Reilly Arts Center Founders' Club at select events				
Dedicated parking in the east parking lot at select events				
Invitation to private reception hosted by the board president				
Value in goods and services		\$425	\$1200	\$1650

TO MAKE A DONATION OR BECOME A MEMBER, please indicate on your ticket order form (step 5 payment information), or process your membership online at www.reillyartscenter.com/support, or contact Natalie McComb, Executive Director at 352.351.1606, x102 or natalie@reillyartscenter.com.

The Ocala Symphony Orchestra, Inc. is registered with the Florida Department of Agriculture and Consumer Services under #CH11602. A copy of the official registration and financial information may be obtained from the Division of Consumer Services by calling toll-free at 1-800-435-7352, within Florida. Registration does not imply endorsement, approval, or recommendation by the State of Florida. The Federal Tax ID number of the Ocala Symphony is 59-1581448.

2026/2027 TICKET ORDER FORM

*All prices are inclusive of ticket fees

1 SELECT YOUR SEASON SUBSCRIPTION

Subscription Packages include a ticket to *all* subscription concerts, and a complimentary ticket upon request to the Young Artist Competition Honors Recital.

<input type="checkbox"/> Same Seats <input type="checkbox"/> Change Seats <input type="checkbox"/> New Subscriber	Seating Area	Saturdays at 7:30 PM		Sundays at 3:00 PM	
		QTY	Total \$	QTY	Total \$
	Tier A	\$197			
	Tier B	\$173			
	Tier C	\$146			
	Tier D	\$89			
Seating Comments / Special Instructions: _____		Total Season Subscription Package \$ _____			



2 SELECT YOUR ADDITIONAL CONCERTS

Same Seats as Subscription seats, if possible

Seating Area	Quantity	Total \$
Red, White and OSO Blue Saturday, June 27, 2026 - 3:00PM		
Tier A \$56	Tier B \$47	Tier C \$38
Tier D \$20		
Red, White and OSO Blue Sunday, June 28, 2026 - 3:00PM		
Tier A \$56	Tier B \$47	Tier C \$38
Tier D \$20		
A Choral Portrait of America Sunday, Sept. 27, 2026 - 3:00PM		
Tier A \$56	Tier B \$47	Tier C \$38
Tier D \$20		
Disney's Aladdin in Concert Saturday, Nov. 7, 2026 - 7:30PM		
Tier A \$85	Tier B \$70	Tier C \$50
Tier D \$35		
Disney's Aladdin in Concert Sunday, Nov. 8, 2026 - 3:00PM		
Tier A \$85	Tier B \$70	Tier C \$50
Tier D \$35		
Handel's Messiah Sunday, Nov. 22, 2026 - 3:00PM		
Tier A \$56	Tier B \$47	Tier C \$38
Tier D \$20		
Nutcracker with the OSO and Dance Alive Friday, Dec. 11, 2026 - 7:00PM		
Tier A \$130	Tier B \$100	Tier C \$90
Tier D \$70		
Nutcracker with the OSO and Dance Alive Saturday, Dec. 12, 2026 - 8:00PM		
Tier A \$130	Tier B \$100	Tier C \$90
Tier D \$70		
Mystical Songs Sunday, March 7, 2027 - 3:00PM		
Tier A \$56	Tier B \$47	Tier C \$38
Tier D \$20		
Steeln' Peaches: An Allman Brothers Symphonic Experience Saturday, April 2, 2027 - 7:30PM		
Tier A \$70	Tier B \$62	Tier C \$51
Tier D \$45		
Music Box 1: The Lyrical Cello Aug. 23, 2026 - 3:00PM		
Tier A \$45	Tier B \$40	Tier C \$35
Music Box 2: All in the Family: The Whole Kitts and Caboodle Sept. 20, 2026 - 3:00PM		
Tier A \$45	Tier B \$40	Tier C \$35
Music Box 3: Duo Sylvania Nov. 15, 2026 - 3:00 PM		
Tier A \$45	Tier B \$40	Tier C \$35
Music Box 4: OSO Percussion Ensemble Feb. 7, 2027 - 3:00 PM		
Tier A \$45	Tier B \$40	Tier C \$35
Music Box 5: Joshua and Hannah Mazur May 2, 2027 - 3:00 PM		
Tier A \$45	Tier B \$40	Tier C \$35

Total Additional Concerts \$ _____

TICKET ORDER FORM (CONT.)

To purchase tickets and give a donation, complete and mail order form to the Reilly Arts Center at 500 NE 9th St., Ocala, FL 34470.

OR place your order by calling the box office at 352.351.1606 EXT. 101 or visiting T-F, 9AM-1PM.

3 SUBSCRIBER INFORMATION

Name(s) _____

Address _____

City _____ State _____ Zip _____

Phone _____

Email _____

4 DONATION AND/OR MEMBERSHIP *See page 14 for information

I would like to donate to the annual fund (100% tax deductible):

Name a Seat (\$1,000) \$500 \$250 Other: \$ _____

I would like to become a Member (tangible benefits provided):

Fan (\$100) Friend (\$1,000) Director (\$5,000) Producer (\$15,000)

I wish to learn more about including the Ocala Symphony in my estate plans.

5 PAYMENT INFORMATION

Total Season Subscription Package:	\$ _____
Total Signature Events & Series:	\$ _____
<i>Add a Donation</i>	\$ _____
Add a Membership:	\$ _____
GRAND TOTAL:	\$ _____

Contact me for payment

I have enclosed a check

Check # _____

Charge amount to my credit card: Visa MasterCard Discover Amex

Credit Card # _____

Expiration Date _____ / _____ Security Code (back of card) _____

Name on Card (please print) _____

Signature _____

For donation, recognize me/us as: _____



MILESTONES *for* MUSIC CAMPAIGN

WE INVITE YOU TO HELP BUILD A STRONGER FUTURE
FOR YOUR ORCHESTRA AND THE COMMUNITY BY:

Strengthening

Musical and Artistic Excellence

Achieving

Financial Sustainability

Expanding

Education and Community Engagement

Enhancing

Ocala's Cultural Arts Scene

- EXPLORE NAMING OPPORTUNITIES
- JOIN THE LEGACY CIRCLE
- LEARN MORE

www.reillyartscenter.com/milestones-campaign



OCALA
SYMPHONY

Matthew Wardell, Music Director



REILLY
ARTS CENTER



Matthew Wardell, Music Director

500 NE 9th St. Ocala, FL 34470
352.351.1606 www.ReillyArtsCenter.com

NON-PROFIT
US POSTAGE
PAID
OCALA, FL
PERMIT #46